



Education in Palliative and End-of-Life Care®



The 26th Annual EPEC Trainer Conferences and Professional Development Workshop

September 24-26th, 2026
The Hyatt Lodge | Oak Brook, IL

Northwestern University
Feinberg School of Medicine
www.epec.net



3 Days, 3 Conferences

EPEC's annual event consists of 3 distinct conference opportunities:

- “Become an EPEC Trainer” on September 24th & September 25th
- “Become an EPEC-Emergency Medicine Trainer” (EM) on September 24th & September 25th
- “Professional Development Workshop” (PDW) on September 26th

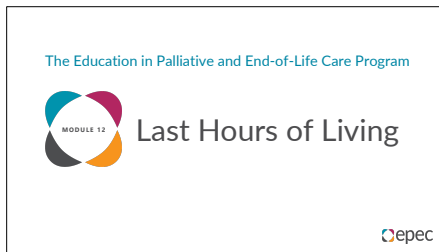
The Professional Development Workshop can be attended separately or in conjunction with either “Become a Trainer” conference.

“Become an EPEC Trainer” and “Become an EPEC-EM Trainer” conferences lead to participants becoming certified EPEC Trainers who can implement effective palliative care practices at their home institutions and teach others to do the same. The PDW provides opportunities to practice and further enhance teaching and leadership skills.

Why EPEC?

The Education in Palliative and End-of-life Care (EPEC) program, founded in 1999, uses a high-impact, high dissemination curriculum to spread primary palliative care competencies to health care providers across the US and the world. More than 3,500 EPEC Trainers in the US and 25 countries abroad teach the EPEC curriculum to thousands of their colleagues each year. The EPEC program:

- » Is built upon a comprehensive, interdisciplinary palliative care curriculum written and continually updated by experts in the field.
- » Provides a unique opportunity to learn to teach palliative care to colleagues.
- » Allows for hands-on practice to train in effective educational techniques to reach adult learners, including *case-based teaching, role play, and interactive lectures*.
- » Is led by experienced palliative care faculty and maintains a very low faculty-to-participant ratio. (*1:20 in Trainer conferences, 1:8 in the PDW*)



Conference Registration and Pricing

To register for a conference, go to www.epec.net to complete the online registration form. For more information, please email us at epec@northwestern.edu. Refunds minus a \$50 handling fee will be granted if requested prior to **August 24, 2026**. Refunds will not be given after this date. Registration fees can be applied to participation in a future equivalent conference.

	Before August 24	After August 24
EPEC* Sept 24-25	\$895	\$995
EPEC-EM* Sept 24-25	\$895	\$995
Professional Development Workshop Sept 26.	\$495	\$595
EPEC or EPEC - EM and PDW Sept 24-26.	\$1200	\$1300

Conference fees include: breakfast and lunch each day, electronic copies of the slides and videos as well as teacher notes and a chapter on each topic.

Hotel Information

The conference will be held at 2715 Jorie Blvd, Oak Brook, IL 60523. Lodging is at the adjacent Hyatt Lodge. Call the Hyatt Lodge for reservations at 888-421-1442 and mention the “Annual EPEC Conference and PDW” to receive our discounted rate of \$209 with tax.



Conference Faculty

MASTER FACILITATORS



Arthur R. Derse, MD, JD
Director, Center for Bioethics
and Medical Humanities
Medical College of Wisconsin
Milwaukee, WI
Master Facilitator, EPEC and EPEC-EM



Paul DeSandre, DO, FAAHPM
Associate Professor of Emergency
Medicine, Emory University
Chief of Palliative and Supportive Care
at Grady Memorial Hospital
Atlanta, GA
Master Facilitator, EPEC-EM



Joshua Hauser, MD, FAAHPM
Director, EPEC
Professor, Feinberg School of Medicine,
Chicago, IL
Section Chief of Palliative Care at Jesse
Brown VA Medical Center in Chicago
Master Facilitator, EPEC and PDW



Michael Preodor, MD
Retired Medical Director, Palliative Care
Advocate Lutheran General Hospital
Park Ridge, IL
Master Facilitator, EPEC and PDW



Tammie Quest, MD, FAAHPM
Past President of AAHPM
Director of Emory Palliative Care
Center at Emory University School of
Medicine, Atlanta, GA
Master Facilitator, EPEC-EM



Gordon J. Wood, MD, FAAHPM
Associate Director, EPEC
Associate Professor, Feinberg School of
Medicine
Northwestern University
Chicago, IL
Master Facilitator, EPEC and PDW

'Become an EPEC-Trainer' Conference

The 'Become an EPEC Trainer' is the core EPEC Curriculum aimed at clinicians of all disciplines who care for seriously ill patients. This conference teaches essential palliative care competencies and focuses equally on teaching people how to teach these competencies to others. Attendees receive electronic copies of the slides and videos as well as teacher notes and a chapter on each topic.

September 24

8:00 a.m. to 5:00 p.m.

- » Elements and Gaps of Care
- » Trajectories and Prognoses
- » Whole Patient Assessment & Goals of Care
- » Communicating Bad News
- » Pain Management
- » Psychosocial Issues
- » Depression, Anxiety, & Delirium
- » Physical Symptoms
- » Legal Issues

September 25

8:00 a.m. to 5:00 p.m.

- » Medical Futility
- » Physician-Assisted Suicide
- » Withholding/Withdrawing Therapy
- » Last Hours of Living
- » Professional Self-Care
- » Planning an Education Event
- » Next Steps

EPEC Objectives

- » Describe the gaps in and elements and models of end-of-life care and related legal issues.
- » Explain the principles of pain management and recognize other common symptoms, including dyspnea, nausea/vomiting, constipation, depression, anxiety, and delirium.
- » State strategies to address requests for physician-assisted suicide, sudden illness, medical futility, and withholding/withdrawing therapy.
- » Identify approaches to effective communication, decision-making about goals of care, advanced care planning, and whole patient assessment.
- » Improve palliative care teaching skills.

'Become an EPEC-Emergency Medicine Trainer' Conference

The 'Become an EPEC - EM Trainer' Conference is an adaptation of the core EPEC curriculum focused on Palliative Care in the Emergency Department. This conference teaches essential palliative care competencies and focuses equally on teaching people how to teach these competencies to others, including also providing electronic copies of the slides and videos as well as teacher notes and a chapter on each topic.

September 24

8:00 a.m. to 5:00 p.m.

- » Ethical and Legal Issues
- » Trajectories and Prognoses
- » Rapid Palliative Care Assessment
- » Goals of Care
- » Advance Care Planning
- » Caring for Hospice Patients
- » Psychosocial Aspects of Care
- » Withholding/Withdrawing Therapy
- » Family-witnessed Resuscitation
- » Breaking Bad News

EPEC-EM Objectives

At the conclusion of this conference, participants will be able to:

- » Describe elements, models of, and legal issues pertinent to end-of-life care in the emergency setting.
- » Explain the principles used in the rapid assessment of patients near the end-of-life.
- » Describe rapid communication strategies, how to successfully implement family-witnessed resuscitation, how to communicate effectively, and how to guide decision making.
- » Improve palliative care teaching skills.

September 25

8:00 a.m. to 5:00 p.m.

- » Common Symptoms
- » Chronic Pain
- » Malignant Pain
- » Complications of Cancer
- » Last Hours of Living
- » Teaching Palliative Care in the ED
 - Interactive Teaching
 - Role Playing
 - Case-based Teaching

Professional Development Workshop

The target audience for this workshop is those who want to further enhance their teaching and leadership skills. The Professional Development Workshop (PDW) features in-depth teaching and feedback opportunities for participants and is a required course for participants interested in becoming EPEC Master Facilitators.

September 26

8:00 a.m. to 5:00 p.m.

Improving Teaching Skills

- » Know Your Curriculum: Structure and background of EPEC
- » Giving Interactive Lectures
- » Facilitating Small Group Discussions
- » Teaching with Role Play

PDW Objectives

At the conclusion of this conference, participants will be able to:

- » Describe adult learning theory and recognize how clinicians learn.
- » Practice giving interactive lectures.
- » Practice facilitating small group teaching.
- » Practice running a role play.

