

# EPEC-EM TRAINER CONFERENCE

Education in Palliative and End-of-Life Care  
Emergency Medicine Trainer Conference

## Detroit, MI

### June 7<sup>th</sup> and 8<sup>th</sup>, 2024



Education in Palliative and End-of-Life Care®

Register for EPEC-EM  
Detroit Conference



# WHY EPEC-EM?

For the first time EPEC is coming to Detroit! Join us for an engaging and insightful conference, encompassing palliative care education in the emergency department and acute care setting. Become a certified EPEC-EM Trainer who can implement effective palliative care practices and education at your home institutions and teach others to do the same.

The Education in Palliative and End-of-life Care (EPEC) program, founded in 1999, uses a high-impact, high dissemination curriculum to spread primary palliative care competencies to health care providers across the US and the world. More than 3,500 EPEC Trainers in the US and 25 countries abroad also teach the EPEC curriculum to thousands of their colleagues.

The EPEC-EM Program is built upon a comprehensive, interdisciplinary palliative care curriculum written and continually updated by experts in the field. This course is specifically designed and directed for Emergency Medicine clinicians and educators.

This program allows for hands-on practice to train in effective educational techniques to reach adult learners, including case-based teaching, role play, and interactive lectures. This course is led by experienced palliative care and emergency medicine faculty and maintains a very low faculty-to-participant ratio.

To Learn More About EPEC-EM  
Visit The EPEC Webpage:

<https://www.bioethics.northwestern.edu/programs/epec/index.html>





## Become an EPEC-Emergency Medicine Trainer Conference

The 'Become an EPEC-EM Trainer' Conference is a specialized adaptation of the core EPEC curriculum tailored to address Palliative Care in the Emergency Department, emphasizing the skills needed to effectively teach these competencies to others. Participants will receive electronic copies of slides, videos, teacher notes, and a comprehensive chapter on each topic covered.

### June 7th

**8:00 AM to 5:00 PM**

- » Ethical and Legal Issues
- » Trajectories and Prognoses
- » Rapid Palliative Care Assessment
- » Goals of Care
- » Advance Care Planning
- » Caring for Hospice Patients
- » Psychosocial Aspects of Care
- » Withholding/Withdrawing Therapy
- » Family-witnessed Resuscitation
- » Breaking Bad News

### June 8th

**8:00 AM to 5:00 PM**

- » Common Symptoms
- » Chronic Pain
- » Malignant Pain
- » Complications of Cancer
- » Last Hours of Living
- » Teaching Palliative Care in the ED
- » Interactive Teaching
- » Role Playing
- » Case-based Teaching

### June 7th 6:00 PM to 8:00 PM – NETWORKING EVENT

- » Optional Self Pay Dinner and Networking Event Set Up by Course Faculty at Local Restaurant. More Details to Follow.



# Wayne County Community College Downriver Campus

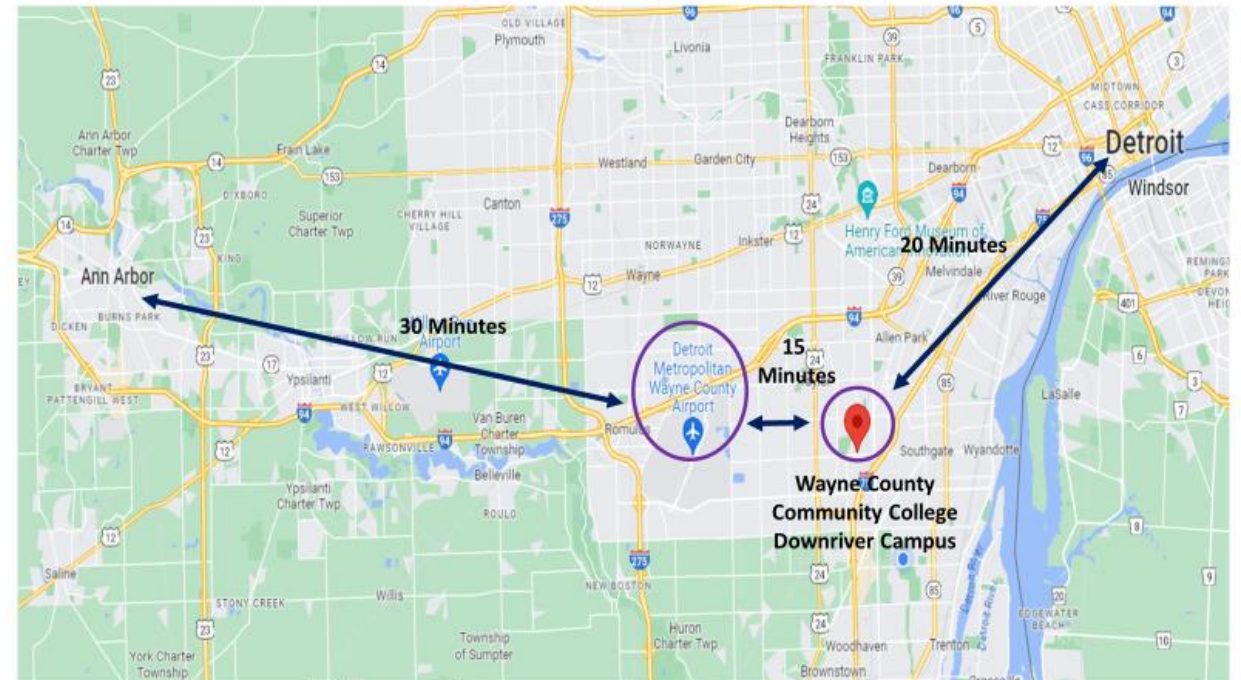
21000 Northline Road  
Taylor, MI, 48180



# EPEC-EM Detroit Conference WCCC Downriver Campus

**Within 15 Minutes From Detroit Metro Airport  
Free & Accessible Parking**

**\$20 Lyft Ride From Airport or Downtown  
20 Minute Drive to Downtown Detroit, MI  
30 Minute Drive to Ann Arbor, MI**



# Introducing Our EPEC-EM Master Facilitators

## Tammie Quest, MD

Dr. Tammie E. Quest holds the esteemed Montgomery Chair in Palliative Medicine and serves as a Professor in the Department of Emergency Medicine and Palliative Medicine at Emory University. As the Director of the Emory Palliative Care Center, she plays a pivotal role in advancing palliative care initiatives.

With a distinguished career, Dr. Quest has made significant contributions to the field of palliative medicine. She has served as the Past President of the American Academy of Hospice and Palliative Medicine. She is renowned for her advocacy for early access to palliative medicine, particularly in the emergency department. Dr. Quest was instrumental in developing the curriculum for the Education in Palliative and End-of-Life Care for Emergency Medicine (EPEC-EM) program, which has had a profound impact on training healthcare professionals in emergency settings.

Dr. Quest's commitment to advancing palliative care extends to her research endeavors. She has secured multiple grants from the National Institutes of Health (NIH) and other prestigious foundations to support innovative projects in palliative care. Her research interests span various areas, including quality improvement, emergency medicine, HIV palliative care, spiritual-based decision making, and end-of-life care in assisted living settings.



## Paul DeSandre, DO

Dr. Paul L. DeSandre, DO, FACEP, FAAHPM, serves as the Chief of Palliative and Supportive Care at Grady Health System in Atlanta, GA. He previously held roles as the Program Director for the Hospice and Palliative Medicine Fellowship at Emory University School of Medicine and as the Associate Residency Director for Emergency Medicine at Beth Israel Medical Center in New York, NY.

Dr. DeSandre is dedicated to integrating Emergency Medicine and Hospice and Palliative Medicine to deliver comprehensive care across diverse healthcare settings. As an accomplished clinical research scientist, he has focused his scholarly contributions on the integration of palliative care into emergency medicine and the development of palliative EM milestones in ACGME EM residencies.



Recognized as a Master Facilitator in the NCI-sponsored Education in Palliative and End-of-Life Care-Emergency Medicine (EPEC-EM) Project, Dr. DeSandre plays a pivotal role in shaping education and training initiatives in this critical domain. Additionally, he contributes his expertise to the Task Force Developing New Exam Content in Hospice and Palliative Medicine for the American Board of Internal Medicine.

# Introducing Our EPEC-EM Course Faculty



**Satheesh Gunaga, DO, FACEP**

Vice Chair of Emergency Medicine  
Hospice & Palliative Medicine Champion  
ED Research Director  
Henry Ford Wyandotte Hospital

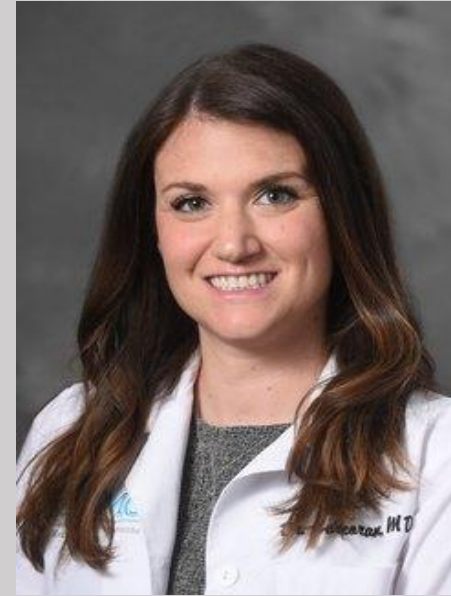
Assistant Clinical Professor  
Michigan State University  
College of Osteopathic Medicine



**Alyssa Buchheister, DO**

Senior Staff ED Physician  
Hospice & Palliative Medicine Champion  
EM & HPM Clinical Researcher  
Henry Ford Wyandotte Hospital

Assistant Clinical Professor  
Michigan State University  
College of Osteopathic Medicine



**Jessica Corcoran, MD**

Core Faculty EM Residency  
EM Residency Simulation Specialist  
Hospice & Palliative Medicine Champion  
Henry Ford Wyandotte Hospital

Assistant Clinical Professor  
Michigan State University  
College of Osteopathic Medicine



**Abe Al-Hage, DO**

Senior Staff ED Physician  
Hospice & Palliative Medicine Champion  
EM & HPM Clinical Researcher  
Henry Ford Wyandotte Hospital

Assistant Clinical Professor  
Michigan State University  
College of Osteopathic Medicine

## Conference Registration and Pricing

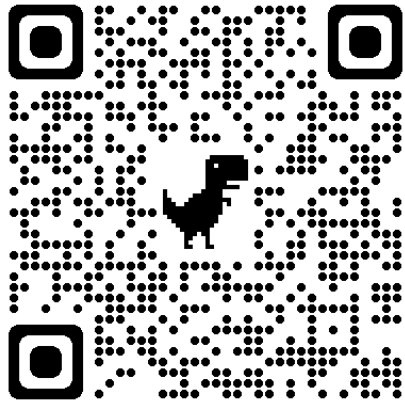
EPEC-EM June 7 & 8th, 2024

**Course Pricing Before May 15<sup>th</sup> --- \$795**

**Course Pricing After May 15<sup>th</sup> --- \$995**

To register for this conference, go to the registration QR Code or link below and complete the online registration form.

[Register for EPEC-EM Detroit Conference](https://form.jotform.com/240155101299147)



<https://form.jotform.com/240155101299147>

## Registration Details

Maximum Course Registrants: 30 Participants

10% Registration Discount for Groups of Four From  
The Same Health System or Organization

For questions, please email us at:

**buchheis@gmail.com**

Conference fees include, breakfast and lunch each day, electronic copies of the slides and videos as well as teacher notes and chapter on each topic.

Refunds minus a \$50 handling fee will be granted if requested prior to June 1st, 2024. Refunds unfortunately will not be given after this date.

# RECOMMENDED LODGING

## STAYBRIDGE SUITES SOUTHGATE

1.4 MILES FROM WCCC

---

≈ \$134 / Night

Address: 12600 Reeck Rd, Southgate, MI 48195

Phone: 734-287-4200





# RECOMMENDED LODGING

**HOME2 SUITES BY HILTON**

## SOUTHGATE

**1.7 MILES FROM WCCC**

---

**≈ \$160 / Night**

Address: 14300 Pardee Rd, Taylor, MI 48180

Phone: 734-486-7200

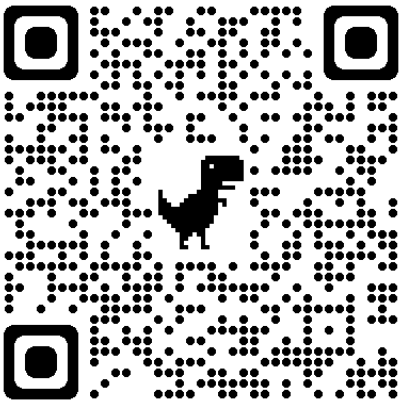


# BECOME AN EPEC EMERGENCY MEDICINE TRAINER

## FRIDAY & SATURDAY, June 7<sup>th</sup> and 8<sup>th</sup>, 2024

### Detroit , Michigan

Register for EPEC-EM  
Detroit Conference



<https://form.jotform.com/240155101299147>

The 'Become an EPEC-EM Trainer' Conference is a specialized adaptation of the core EPEC curriculum tailored to address Palliative Care in the Emergency Department, emphasizing the skills needed to effectively teach these competencies to others. Participants will leave with a playbook including electronic copies of PowerPoint slides, videos, teacher notes, and a comprehensive chapter on each topic covered.

To Learn More About EPEC-EM  
Visit The EPEC Webpage:



<https://www.bioethics.northwestern.edu/programs/epec/index.html>



Education in Palliative and End-of-Life Care